



FURNEAUX

LODGE

Trade Manual 2020-22
to 30 Apr 2022
as at 12.10.20



Trade bookings: +64 3 579 8259

trade@furneauxlodge.co.nz

www.furneauxlodge.co.nz



Furneaux Lodge

Welcome to Furneaux Lodge	5
A tranquil natural New Zealand destination	5
Getting here	6
Retail tariffs	8
Food tariffs	9
Dining at Furneaux	11
Onsite activities	11
Offsite activities	12
Accommodation	14
Furneaux Lodge details	18
Terms	19
Banking details	20
Contact details	21
Marketing details	22
Property map	24
Lodge location	25
Marlborough location	26



Trade bookings: +64 3 579 8259

trade@furneauxlodge.co.nz

www.furneauxlodge.co.nz



Welcome to Furneaux Lodge

Located at the head of Endeavour Inlet in the stunning Marlborough Sounds at the tip of New Zealand's South Island, Furneaux Lodge has a backdrop of native forest and lush rolling lawns right to the stunning blue-green water.

Our range of recently refurbished accommodation offers something for everyone, whether you arrive by boat or along the Queen Charlotte Track by foot or bike.

Please note, there is no road access to Furneaux Lodge.

A tranquil natural New Zealand destination

Escape away from the hustle and bustle of city life and make your way to Furneaux Lodge and its beautiful, tranquil grounds.

This magnificent Marlborough Sounds accommodation is an exclusive bush retreat and eco resort that is steeped in history, making it perfect for a romantic weekend getaway.

Relaxing and peaceful, the lodge is family-owned and operated. Our attention to guests and passion for Furneaux and the Marlborough Sounds will ensure that your time here is enjoyable and memorable.

Whether you're walking or biking the Queen Charlotte Track, wanting to relax in paradise, getting married, or seeking an activity-packed holiday, Furneaux Lodge is your ideal waterfront destination.

As one of New Zealand's sunniest regions, Marlborough's climate is typically sunny and dry throughout the year. Average daytime temperature in the Marlborough Sounds over summer (Dec-Feb) is 20-26 degrees Celsius, with 10-15 degrees Celsius during daytime over winter (Jun-Aug).

Getting here

Furneaux Lodge is accessible by boat from Picton, or on foot or bike on the Queen Charlotte Track.

Scheduled water transfer Cougar Line scheduled transfer times vary from approximately 60-90 minutes of scenic cruise.
Scheduled departures from Picton (Oct-Apr):
 8am, 10am, 1.30pm, 6pm Fridays (Oct-Nov), 6pm daily (Dec-Apr).
Scheduled departures from Picton (May-Sept):
 9am, 1.30pm; 5.30pm Fridays
Scheduled departures from Furneaux Lodge (Oct-Apr):
 9.30am, 11.30am, 3pm, 7pm
Scheduled departures from Furneaux Lodge (May-Sept):
 10.30am, 3pm daily, 6.45pm Fridays

Private water transfer 50-60mins from Picton by Cougar Line water taxi.

Queen Charlotte Track 5.5 hour walk from Ship Cove, 3.5 hour walk from Resolution Bay, 3-4 hour walk from Punga Cove – or faster by bike. Cougar Line operates daily water transport to Ship Cove and Resolution Bay, together with other stops along Queen Charlotte Track.

You can fly direct to Marlborough Airport in Blenheim from Auckland and Wellington. It's a 30 minute drive to Picton from the airport. Airport transfers are available through Marlborough Tour Company.

Other ways of getting to Picton include driving from Christchurch, Nelson and the West Coast, taking a ferry into Picton or Sounds Air flight into Koromiko Airport from Wellington, or direct helicopter transfers from Wellington, Blenheim and Nelson.





Trade bookings: +64 3 579 8259

trade@furneauxlodge.co.nz

www.furneauxlodge.co.nz



Retail tariffs

Rates are for two people double or twin share and include:

- Tea & coffee facilities
- Wi-Fi use – generally available in the main lodge
- GST (New Zealand Goods & Services Tax)

Room-only rate for two guests

	Avail	Pax	Sqm	Bedrooms	Off Peak	Peak	High Peak
Endeavour Suite	10	2	37	1 bedroom: King spilt	\$240	\$370	\$390
Cook's Cottage	8	4-5	55-67	2 bedrooms: Queen + 2-3 singles	\$220	\$340	\$375
Tobias Junior Suite	4	2	39-42	1 bedroom: King spilt	\$220	\$340	\$375

* Charge for additional guests in cottages is \$80 per night for adults & \$40 per night for children (5-15 years), 0-4 years are free. Rates are gross commissionable and include New Zealand Goods & Services Tax (GST).

Breakfast-included rate

- Room tariff includes relaxed, café-style breakfast with 1x espresso coffee/tea per person for two guests

	Avail	Pax	Sqm	Bedrooms	Off Peak	Peak	High Peak
Endeavour Suite	10	2	37	1 bedroom: King spilt	\$320	\$450	\$470
Cook's Cottage	8	4-5	55-67	2 bedrooms: Queen + 2-3 singles	\$300	\$420	\$455
Tobias Junior Suite	4	2	39-42	1 bedroom: King spilt	\$300	\$420	\$455

* Bed and Breakfast charge for additional guests in cottages is \$120 per night for adults & \$80 per night for children (5-15 years), 0-4 years are free. Rates are gross commissionable and include New Zealand Goods & Services Tax (GST).

Seasons:

Off Peak

12 – 31 Oct 2020
1 May – 31 Oct 2021

Peak

1 Nov – 21 Dec 2020
11 Jan – 30 Apr 2021
1 Nov – 21 Dec 2021
16 Jan – 30 April 2022

High Peak

22 Dec 2020 – 10 Jan 2021
22 Dec 2021 – 15 Jan 2022

Water transfers:

Cougar Line scheduled return water transfers - Adults: \$55pp one way/\$90pp return; Children (5-15 years): \$40pp one way/\$50pp return (0-4 years are free). Water transfers can be arranged directly with Furneaux Lodge at time of reservation.

Option for private water taxi with Cougar Line taking 50-60mins – please enquire for pricing.

Public holiday surcharges:

Furneaux Lodge does not apply public holiday surcharges to its pricing.

Food tariffs

The below food rates are net prices (GST inclusive, non-commissionable).

Breakfast

Relaxed, café-style breakfast \$29
(Includes 1 tea/espresso coffee)

Packed lunch (Perfect for hikers or offsite adventures)

Sandwich with choice of filling, homemade baking, fruit, and juice or water. \$25

Dinner

2 course a la carte (entrée & main or main & dessert) \$70

3 course a la carte \$85

(Beverages that are not included above are charged separately)





Trade bookings: +64 3 579 8259

trade@furneauxlodge.co.nz

www.furneauxlodge.co.nz



Dining at Furneaux

Furneaux Lodge's restaurant and bar is set up to serve delicious food and refreshing beverages all day – from breakfast and coffee in the morning to lunch, snacks with afternoon drinks and dinner in the evening.

We have a well-earned reputation for serving fresh, tasty and satisfying meals. Choose from a wide selection of local seafood dishes, gourmet burgers and delicious steaks, or try the classic Furneaux fish and chips. Lighter options are also available.

Dine indoors in the lodge, under our covered verandah with sea views or on the extensive lawns.

- Rooms feature coffee and tea facilities, with a mini fridge.
- For those heading out for the day, we offer delicious packed lunches.
- Lunch jetty-side at the Boatshed Café & Bar at our sister lodge Punga Cove across the inlet (catch the morning Cougar Line boat over, enjoy stone-baked pizza and more, and walk back to Furneaux Lodge - 3-4 hours walk).

Onsite activities

Included in the tariff

- Kayaks
- Paddle boards (SUPs)
- Hot tub
- Volleyball
- Wi-Fi (near the lodge bar and restaurant)
- Walk to the nearby ancient Rimu tree or a section of the Queen Charlotte Track

Or simply relax and enjoy the views, native forest and birdlife from your sundeck or from the plentiful hammocks on the waterfront.

Offsite activities

Available on request, additional charges apply.

A range of land and water-based activities allow you to explore the local area, including:

- Boat-lunch-walk: Catch the scheduled morning Cougar Line boat to our sister lodge Punga Cove across the inlet, have lunch at the Boatshed Café & Bar and walk back to lodge (11km, 3-4 hours walk).
- Boat-lunch-boat: Catch the scheduled morning Cougar Line boat, cruise through the Marlborough Sounds to Picton, enjoy lunch or a wander of the shops, then board the 1.30pm Cougar Line for a leisurely boat ride back to the lodge.
- Charter your own cruise - explore Motuara Island bird sanctuary, historic Ship Cove/Meretoto, local aquaculture farms, and more.
- Bike the Queen Charlotte Track – 2 hours to Punga Cove for lunch or a drink (bikes are available for hire)





Trade bookings: +64 3 579 8259

trade@furneauxlodge.co.nz

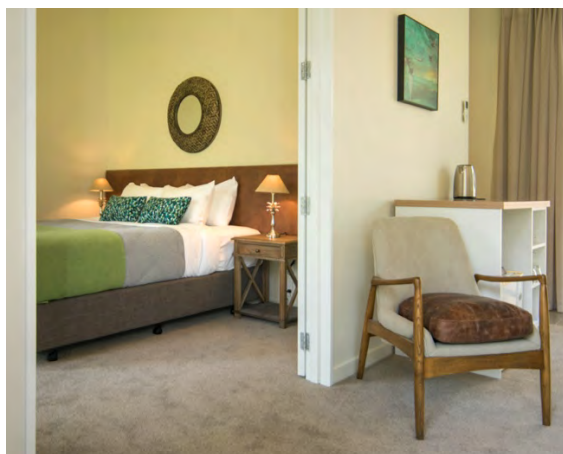
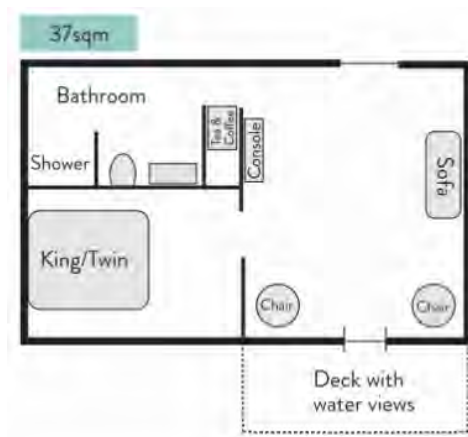
www.furneauxlodge.co.nz



Accommodation

Endeavour Suites (10 available)

- One-bedroom suites – ground floor
- 37sqm
- Max 2 guests
- King split beds – king or twin option
- Bathroom with shower
- Mini fridge with tea & coffee making facilities
- Air conditioning/heat pump
- Deck with water views



Suite bedroom



Suite lounge & deck

Room-only rate for two guests

	Avail	Pax	Sqm	Bedrooms	Off Peak	Peak	High Peak
Endeavour Suite	10	2	37	1 bedroom: King split	\$240	\$370	\$390

Rates are gross commissionable and include New Zealand Goods & Services Tax (GST).

Breakfast-included rate

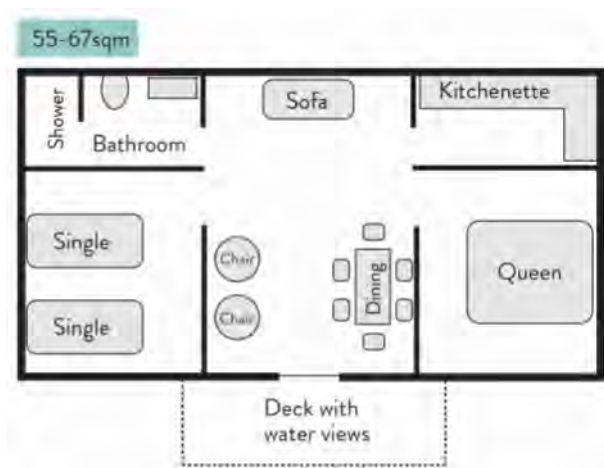
Room tariff includes choice of continental or cooked breakfast and 1x espresso coffee/tea for two guests

	Avail	Pax	Sqm	Bedrooms	Off Peak	Peak	High Peak
Endeavour Suite	10	2	37	1 bedroom: King split	\$320	\$450	\$470

Rates are gross commissionable and include New Zealand Goods & Services Tax (GST).

Cook's Cottages (8 available)

- Two bedroom cottages – ground floor
- 55-67sqm
- Max 5 guests – some cottages sleep 4
- Queen bed in bedroom 1, 2-3 single beds in bedroom 2
- Bathroom with shower
- Kitchenette with hob, microwave & fridge
- Air conditioning/heat pump
- Deck with water views



Cottage lounge & deck



Cottage deck & lawn

Room-only rate for two guests

	Avail	Pax	Sqm	Bedrooms	Off Peak	Peak	High Peak
Cook's Cottage	8	4-5	55-67	2 bedrooms: Queen + 2-3 singles	\$220	\$340	\$375

* Charge for additional guests in cottages is \$80 per night for adults & \$40 per night for children (5-15 years), 0-4 years are free. Rates are gross commissionable and include New Zealand Goods & Services Tax (GST).

Breakfast-included rate

Room tariff includes choice of continental or cooked breakfast and 1x espresso coffee/tea for two guests

	Avail	Pax	Sqm	Bedrooms	Off Peak	Peak	High Peak
Cook's Cottage	8	4-5	55-67	2 bedrooms: Queen + 2-3 singles	\$300	\$420	\$455

* Bed and Breakfast charge for additional guests in cottages is \$120 per night for adults & \$80 per night for children (5-15 years), 0-4 years are free. Rates are gross commissionable and include New Zealand Goods & Services Tax (GST).

Tobias Junior Suites

- One bedroom suites – ground or first floor
- 39-42sqm
- Max 2 guests
- King split bed – king or twin option
- Bathroom with shower
- Tea & coffee making facilities with mini fridge
- Air conditioning/heat pump
- Deck or balcony with water views



Junior Suite bedroom



Junior Suite lounge & bedroom

Room-only rate for two guests

	Avail	Pax	Sqm	Bedrooms	Off Peak	Peak	High Peak
Tobias Junior Suite	4	2	39-42	1 bedroom: King split	\$220	\$340	\$375

Rates are gross commissionable and include New Zealand Goods & Services Tax (GST).

Breakfast-included rate

Room tariff includes choice of continental or cooked breakfast and 1x espresso coffee/tea for two guests

	Avail	Pax	Sqm	Bedrooms	Off Peak	Peak	High Peak
Tobias Junior Suite	4	2	39-42	1 bedroom: King split	\$300	\$420	\$455

Rates are gross commissionable and include New Zealand Goods & Services Tax (GST).



Trade bookings: +64 3 579 8259

trade@furneauxlodge.co.nz

www.furneauxlodge.co.nz



Furneaux Lodge details

Check-in/out

- Check-in is available from 3pm – guests can ask if early check-in available on arrival
- Check-out is available until 10am. Late check-out may be available - guests can request this during their stay

Child policy

Children of all ages are welcome at Furneaux Lodge:

- Child rates apply to children 5-15 years
- Children 0-4 years stay free at Furneaux Lodge when accompanied by paying adults (food and beverages are charged)

High peak dates

Because our Christmas/New Year period is highly popular, we have premium rates over this high peak time.



Terms

Booking terms

Terms apply to companies who have a credit account with Furneaux Lodge or Marlborough Tour Company Group.

Rooms may be 'held' at no charge for a maximum of 10 working days and then must be confirmed or released.

For those without a credit account in place, a 20% deposit is required to be paid at the time of booking with full payment to be made 7 days before the commencement of the booking.

Cancellation policy

8+ days prior to arrival	No charge
7 days – 2 days prior to arrival	Free transfer to another date within a 12-month period, or 100% tariff charge
Within 2 days prior to arrival	100% tariff charge

Cancellation policy – Group bookings (5 rooms or more)

30+ days prior to arrival	No charge
7-30 days prior to arrival	Free transfer to another date within a 12-month period, or 50% tariff charge
1-6 days prior to arrival	100% tariff charge

Cancellations due to Government-imposed travel bans

If your travel plans are interrupted due to Government-imposed travel bans or border closures, you are welcome to transfer your booking to a later date within the next 12 months with no transfer fee. Depending on room type availability and intended travel season, differences in room rate or room type may apply as at the date of rebooking. Otherwise our standard cancellation policy applies.

Cancellations by Furneaux Lodge and Marlborough Tour Company

Furneaux Lodge and Marlborough Tour Company reserve the right to reschedule or cancel any tours, cruises and accommodation booked if it feels that they cannot be undertaken safely, e.g. bad weather conditions. In the event of Furneaux Lodge or Marlborough Tour Company making a cancellation you will be offered an alternate date or option, or receive a full refund.

All transactions are in New Zealand dollars at the time of making a booking and at the time of making a cancellation; Furneaux Lodge and Marlborough Tour Company cannot accept any liability for fluctuation in exchange rates between these transactions taking place.



Trade bookings: +64 3 579 8259

trade@furneauxlodge.co.nz

www.furneauxlodge.co.nz



Banking details

Furieux Lodge

Bank Account	Marlborough Tour Company ANZ Bank 06-0601-0742421-01
Swift Code	ANZBNZ22
GST number	57-785-081
Accounts contact:	accounts@marlboroughtourcompany.co.nz

Contact details

Trade contact	trade@furieuxlodge.co.nz Ph +64 3 579 8259
Physical address	Endeavour Inlet, Queen Charlotte Sound, Marlborough Sounds New Zealand
Postal address	PO Box 1000, Blenheim, Marlborough, New Zealand
Lodge phone	+64 3 579 8259
Lodge email	info@furieuxlodge.co.nz
Website	www.furieuxlodge.co.nz

Marketing details

Furieux Lodge is owned and operated by Marlborough Tour Company.

We have a range of still images and videos available for promotional use.

Online image library – SmugMug <https://marlboroughtourcompany.smugmug.com/Marlborough-Sounds-Accommodation/Furieux-Lodge>

Furieux Lodge video – SmugMug <https://marlboroughtourcompany.smugmug.com/Marlborough-Sounds-Accommodation/Furieux-Lodge/Furieux-Lodge-room-videos/>

Furieux Lodge video – YouTube <https://youtu.be/Bb3oS5-tcPg>

Furieux Lodge video – Vimeo <https://vimeo.com/352554783>

Marlborough Tour Company YouTube channel www.youtube.com/channel/UC_qexf8PaQnvv6rZ6uN5pqg

Marketing contact trade@marlboroughtourcompany.co.nz



Trade bookings: +64 3 579 8259

trade@furneauxlodge.co.nz

www.furneauxlodge.co.nz



Property map



Marlborough location

Marlborough is centrally located in New Zealand, and Marlborough Airport in Blenheim is a short flight from Auckland or Wellington – with a half hour drive to Picton where you can board a Cougar Line boat. It is also a three-hour ferry ride from Wellington or you can drive from Nelson or Christchurch.

