



# Punga Cove

**Trade Manual 2020-22**  
**to 30 Apr 2022**  
as at 12.10.20





Trade bookings: +64 3 579 8561    trade@pungacove.co.nz    www.pungacove.co.nz



# Punga Cove

---

<b>Punga Cove</b>	<b>3</b>
<b>Welcome to Punga Cove</b>	<b>5</b>
<b>A relaxing natural New Zealand destination</b>	<b>5</b>
<b>Getting here</b>	<b>6</b>
<b>Retail tariffs</b>	<b>8</b>
<b>Food tariffs</b>	<b>9</b>
<b>Dining at Punga</b>	<b>11</b>
<b>Onsite activities</b>	<b>12</b>
<b>Offsite activities</b>	<b>12</b>
<b>Accommodation</b>	<b>14</b>
<b>Punga Cove details</b>	<b>20</b>
<b>Terms</b>	<b>21</b>
<b>Marketing details</b>	<b>23</b>
<b>Property map</b>	<b>24</b>
<b>Lodge location</b>	<b>25</b>
<b>Marlborough location</b>	<b>26</b>







## Welcome to Punga Cove

---

Set amongst stunning scenery in the magnificent Marlborough Sounds, Punga Cove is the perfect retreat, surrounded by nature.

Getting here is easy - by boat from Picton, by foot or bike on the Queen Charlotte Track, or by scenic drive. And, once you're here you can choose to relax and enjoy the many views, or partake in the wide range of land and water-based activities on offer.

## A relaxing natural New Zealand destination

---

Whether you're walking or biking the Queen Charlotte Track, wanting to relax in paradise, looking for a family-friendly or romantic getaway, organising a special occasion or work event, or seeking an action-packed holiday, Punga Cove is perfect for you.

Choose to relax and enjoy the amazing views, or explore using the range of land and water-based activities on offer.

Our rooms offer a range of options, from stylish suites, spacious studios and retro chalets or our larger apartments for families and groups.

You won't go hungry at Punga Cove – with relaxed waterside dining at the Boatshed Café & Bar and smart casual dining at the Punga Fern hilltop restaurant.



## Getting here

---

Punga Cove is accessible by boat from Picton, on foot or bike on the Queen Charlotte, or by road:

<b>Scheduled transfer</b>	<p>Cougar Line scheduled transfer times vary from approximately 60-90 minutes of scenic cruise through the Marlborough Sounds:</p> <p><b>Scheduled departures from Picton (Oct-Apr):</b> 8am, 10am &amp; 1.30pm daily; 6pm Fridays (Oct-Nov &amp; Mar-Apr), 6pm daily (Dec-Apr)</p> <p><b>Scheduled departures from Picton (May-Sept):</b> 9am &amp; 1.30pm daily; 5.30pm Fridays</p> <p><b>Scheduled departures from Punga Cove (Oct-Apr):</b> 9.45am, 11.45am, 3.15pm &amp; 7.15pm</p> <p><b>Scheduled departures from Punga Cove (May-Sept):</b> 10.45am, 3.15pm daily; 7pm Fridays</p>
<b>Private transfer</b>	60 mins from Picton by Cougar Line scenic water taxi.
<b>Queen Charlotte Track</b>	3-4 hour walk from Furneaux Lodge. Cougar Line operates daily water transfers from Picton to the start of the Queen Charlotte Track at Ship Cove, and to Furneaux Lodge for shorter walks.
<b>Road</b>	Travel by road is not recommended as a large amount of road is unsealed.

You can fly direct to Marlborough Airport in Blenheim from Auckland and Wellington. It's a 30 minute drive to Picton from the airport. Airport transfers are available through Marlborough Tour Company.

Other ways of getting to Picton include driving from Christchurch, Nelson and the West Coast, taking a ferry into Picton or Sounds Air flight into Koromiko Airport from Wellington, or direct helicopter transfers from Wellington, Blenheim and Nelson.







## Retail tariffs

Rates are for two people double or twin share and include:

- Tea & coffee facilities
- Wi-Fi use – generally available in jetty/bar area
- GST (New Zealand Goods & Services Tax)

### Room-only rate for two guests

	Avail	Pax	Sqm	Bedrooms	Off Peak	Peak	High Peak
Fronde Suite	5	2	42-48	1 bedroom: King split	\$240	\$370	\$390
Mamaku Apartment*	4	4-7	45-97	2-3 bedrooms: King split/Queen + singles	\$220	\$340	\$375
Fern Studio	2	2	31	Studio: King split	\$220	\$340	\$375
Koru Chalet	5	2	22	Studio: Queen	\$180	\$260	\$280

\* Charge for additional guests in apartments is \$80 per night for adults & \$40 per night for children (5-15 years), 0-4 years are free. Rates are gross commissionable and include New Zealand Goods & Services Tax (GST).

### Breakfast-included rate

- Room tariff includes choice of continental or cooked breakfast and 1x espresso coffee/tea for two guests

	Avail	Pax	Sqm	Bedrooms	Off Peak	Peak	High Peak
Fronde Suite	5	2	42-48	1 bedroom: King split	\$320	\$450	\$470
Mamaku Apartment*	4	4-7	45-97	2-3 bedrooms: King split/Queen + singles	\$300	\$420	\$455
Fern Studio	2	2	31	Studio: King split	\$300	\$420	\$455
Koru Chalet	5	2	22	Studio: Queen	\$260	\$340	\$360

\* Bed and Breakfast charge for additional guests in apartments is \$120 per night for adults & \$80 per night for children (5-15 years), 0-4 years are free. Rates are gross commissionable and include New Zealand Goods & Services Tax (GST).

### Seasons:

#### Off Peak

1 May – 31 Oct 2021

1 May - 31 Oct 2022

#### Peak

1 Nov – 21 Dec 2020

11 Jan – 30 Apr 2021

1 Nov – 21 Dec 2021

16 Jan – 30 April 2022

#### High Peak

22 Dec 2020 – 10 Jan 2021

22 Dec 2021 – 15 Jan 2022

### Water transfers:

Cougar Line scheduled return water transfers - Adults: \$55pp one way/\$90pp return; Children (5-15 years): \$40pp one way/\$50pp return (0-4 years are free). Water transfers can be arranged directly with Punga Cove at time of reservation.

Option for private scenic water taxi with Cougar Line (approx 50-60 minutes) – please enquire for pricing.

### Public holiday surcharges:

Punga Cove does not apply public holiday surcharges to its pricing.



## Food tariffs

---

Food rates are net prices (GST inclusive, non-commissionable).

### Full Breakfast

A buffet of continental and cooked breakfast. \$26  
(Includes tea and filter coffee)

### Packed lunch (Perfect for the hiker or offsite adventure)

Sandwich with choice of filling, homemade baking, fruit, and juice or water. \$25

### Dinner

2 course a la carte (entrée & main or main & dessert) \$70

3 course a la carte \$85







Trade bookings: +64 3 579 8561    trade@pungacove.co.nz    www.pungacove.co.nz





## Dining at Punga

You won't go hungry at Punga Cove, with a café/bar and restaurant on-site.



The Boatshed bar and café at the jetty serves a casual menu for lunch and dinner. Enjoy the best pizzas in the Marlborough Sounds, stunning seafoods, craft beer and Marlborough wine, all right on the waterfront



The Punga Fern hilltop restaurant offers smart casual dining featuring the best of local Marlborough produce, paired with Marlborough and international wines. All this while taking in arguably the best view in the Marlborough Sounds.

If you're walking or biking the Queen Charlotte Track or simply heading out for a day trip, we offer packed lunches.

- Rooms feature coffee and tea facilities, with a mini fridge.
- For guests heading out for the day, we offer delicious packed lunches.
- Head to lunch at Furneaux Lodge, our sister lodge, across the inlet (walk to Furneaux Lodge in the morning – 3-4 hour walk – enjoy fresh local cuisine, and catch the afternoon Cougar Line service back to Punga Cove).





## Onsite activities

---

### Included in the tariff

- Kayaks
- Paddle boards (SUPs)
- Open air swimming pool (unheated)
- Spa pools
- Wi-Fi (near the Boatshed Café & Bar)

Or simply relax and enjoy the views, native forest and birdlife from your balcony or alongside the pool, spa and beach.

Nearby walks include:

- Furneaux Lodge – 3-4 hours one way, 11km flat walk, lunch and bar snack menu at restaurant, option to catch Cougar Line boat back.
- Eatwell's Lookout – 4 hours return, medium grade on well maintained Queen Charlotte Track. A track pass (available for purchase from Punga Cove) is required for this section of the track.
- Mt Stokes – 5km drive then 3.5 hours return hike; a steep climb to the top of the tallest point in the Marlborough Sounds, offering spectacular views.
- Punga Loop – 45 min walk via Camp Bay, up to Kenepuru Saddle and back down road to Punga Cove.

## Offsite activities

---

### Available on request, additional charges apply

A range of land and water-based activities allow you to explore the local area, including:

- Walk-lunch-boat: Walk to Furneaux Lodge across the inlet (11km, 3-4 hours walk), have lunch and catch the scheduled afternoon Cougar Line boat back to Punga Cove.
- Boat-lunch-boat: Catch the scheduled morning Cougar Line boat, cruise through the Marlborough Sounds to Picton, enjoy lunch or a wander of the shops, then board the 1.30pm Cougar Line for a leisurely boat ride back to the lodge.
- Charter your own cruise – explore Motuara Island bird sanctuary, historic Ship Cove/Meretoto, local aquaculture farms, and more.
- Bike a section of the Queen Charlotte Track – 2 hours to Furneaux Lodge for lunch or a drink (bike hire is available by advance booking).





**Trade bookings:** +64 3 579 8561    [trade@pungacove.co.nz](mailto:trade@pungacove.co.nz)    [www.pungacove.co.nz](http://www.pungacove.co.nz)





## Accommodation

### Fronde Suites (5 available)

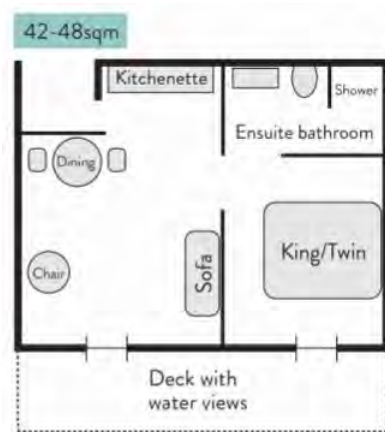


Suite bedroom



Suite bedroom & view

- One bedroom
- 42-48sqm
- Max 2 guests
- King split beds – king or twin options (plus, rollaway bed & cot options)
- Ensuite bathroom with shower
- Air conditioning/heat pump
- Mini fridge & tea/coffee making facilities
- Deck with water views



#### Room-only rate for two guests

	Avail	Pax	Sqm	Bedrooms	Off Peak	Peak	High Peak
Fronde Suite	5	2	42-48	1 bedroom: King split	\$240	\$370	\$390

Rates are gross commissionable and include New Zealand Goods & Services Tax (GST).

#### Breakfast-included rate

Room tariff includes choice of continental or cooked breakfast and 1x espresso coffee/tea for two guests

	Avail	Pax	Sqm	Bedrooms	Off Peak	Peak	High Peak
Fronde Suite	5	2	42-48	1 bedroom: King split	\$320	\$450	\$470

Rates are gross commissionable and include New Zealand Goods & Services Tax (GST).



## Fern Studios (2 available)



Studio lounge area & deck



Studio deck

- Studio
- 31 sqm
- Max 2 guests
- King split beds – king or twin options (plus, rollaway bed & cot options)
- Ensuite bathroom with shower
- Air conditioning/heat pump
- Mini fridge & tea/coffee making facilities
- Deck with water views



### Room-only rate for two guests

	Avail	Pax	Sqm	Bedrooms	Off Peak	Peak	High Peak
Fern Studio	2	2	31	1 bedroom: King split	\$220	\$340	\$375

Rates are gross commissionable and include New Zealand Goods & Services Tax (GST).

### Breakfast-included rate

Room tariff includes choice of continental or cooked breakfast and 1x espresso coffee/tea for two guests

	Avail	Pax	Sqm	Bedrooms	Off Peak	Peak	High Peak
Fern Studio	2	2	31	1 bedroom: King split	\$300	\$420	\$455

Rates are gross commissionable and include New Zealand Goods & Services Tax (GST).

### Koru Chalets (5 available)

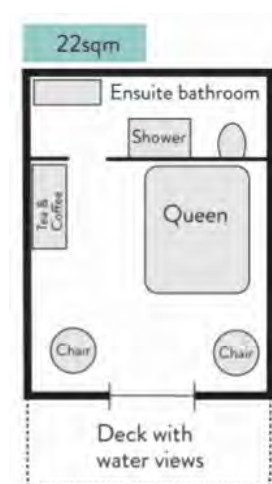


*Chalet studio bedroom*



*Chalet deck*

- Studio
- 22sqm
- Max 2 guests (cots available on request)
- Queen bed
- Ensuite bathroom with shower
- Mini fridge & tea/coffee making facilities
- Wall heater
- Deck with water views



#### Room-only rate for two guests

	Avail	Pax	Sqm	Bedrooms	Off Peak	Peak	High Peak
Koru Chalet	5	2	22	Studio: Queen	\$180	\$260	\$280

*Rates are gross commissionable and include New Zealand Goods & Services Tax (GST).*

#### Breakfast-included rate

Room tariff includes choice of continental or cooked breakfast and 1x espresso coffee/tea for two guests

	Avail	Pax	Sqm	Bedrooms	Off Peak	Peak	High Peak
Koru Chalet	5	2	22	Studio: Queen	\$260	\$340	\$360

*Rates are gross commissionable and include New Zealand Goods & Services Tax (GST).*

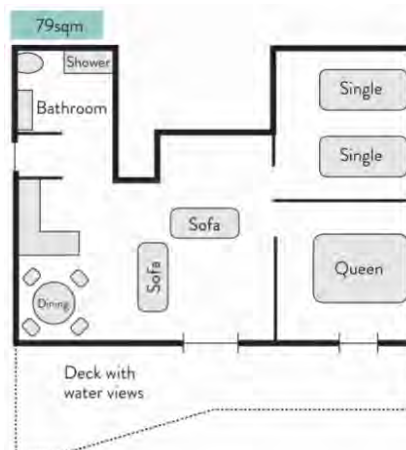


### Mamaku Apartments (4 available)

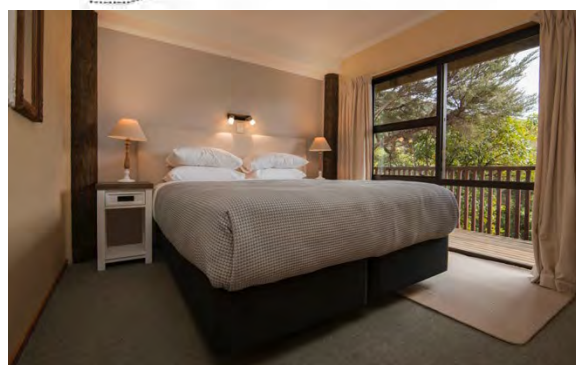
A range of multi-bedroom apartments, of different configurations, each with a deck with water views, mini fridge and tea/coffee making facilities. Rollaway bed & cot available.

### Room 9 (downstairs)

- 2 bedrooms
- 79sqm
- Max 4 guests
- King split + 2x single beds
- Air conditioning/heat pump
- Bathroom with shower



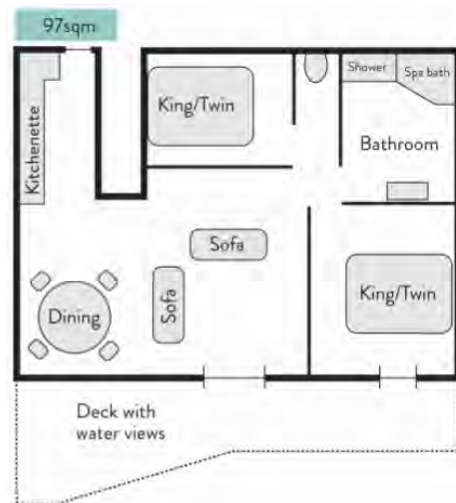
Room 9 lounge & deck



Room 9 bedroom &amp; deck

### Room 10 (upstairs)

- 2 bedrooms
- 97sqm
- Max 4 guests
- King split x 2
- Air conditioning/heat pump
- Bathroom with shower and spa bath



Room 10 dining



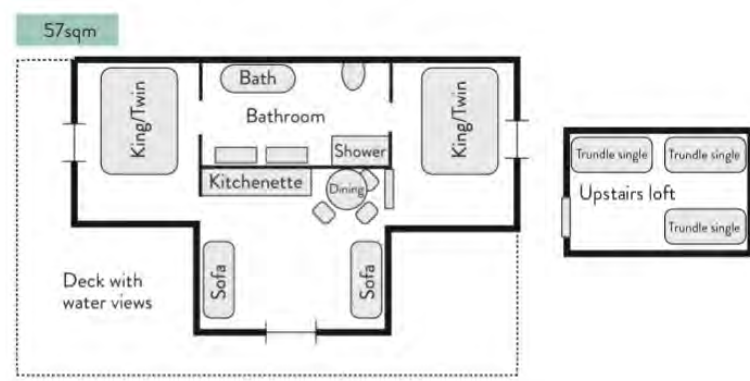
Room 10 lounge



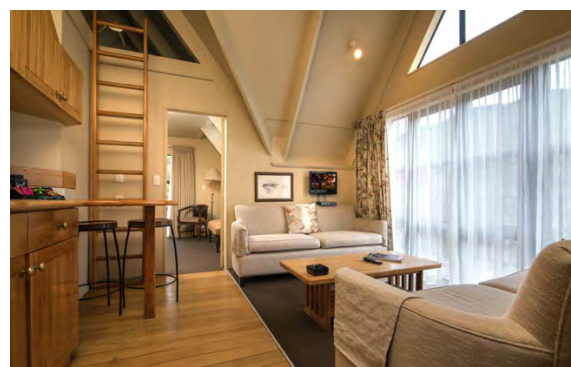
## Mamaku Apartments (cont)

### Room 11

- 3 bedrooms (incl loft)
- 57 sqm
- Max 7 guests
- King split x 2 + 3x trundle singles in loft
- Wall heaters
- Bathroom with shower and spa bath



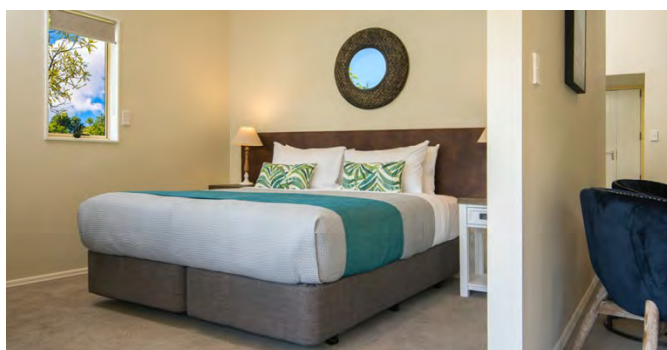
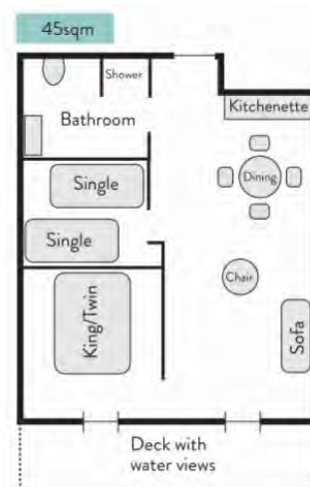
Room 11 bedroom



Room 11 lounge

### Room 17

- 2 bedrooms (note master open plan to lounge - no door)
- 45sqm
- Max 4 guests
- King split – twin option + 2x singles
- Air conditioning/heat pump
- Bathroom with shower



Room 17 bedroom



Room 17 lounge & deck



**Room-only rate for two guests**

	Avail	Pax	Sqm	Bedrooms	Off Peak	Peak	High Peak
Mamaku Apartment*	4	4-7	45-97	2-3 bedrooms: King split/Queen + singles	\$220	\$340	\$375

\* Charge for additional guests in apartments is \$80 per night for adults & \$40 per night for children (5-15 years), 0-4 years are free. Rates are gross commissionable and include New Zealand Goods & Services Tax (GST).

**Breakfast-included rate**

Room tariff includes choice of continental or cooked breakfast and 1x espresso coffee/tea for two guests

	Avail	Pax	Sqm	Bedrooms	Off Peak	Peak	High Peak
Koru Chalet	6	2	22	Studio: Queen	\$300	\$420	\$455

\* Charge for additional guests in apartments is \$120 per night for adults & \$80 per night for children (5-15 years), 0-4 years are free. Rates are gross commissionable and include New Zealand Goods & Services Tax (GST).





## Punga Cove details

---

### Check-in/out

- Check-in is available from 3pm – guests are welcome to ask if early check-in is available on arrival.
- Check-out is available until 10am. Late check-out may be available – guests are welcome to request this during their stay.

### Child policy

Children of all ages are welcome at Punga Cove:

- Child rates apply to children 5-15 years.
- Children 0-4 years stay free at Punga Cove (food and beverages are charged).

### High peak dates

Because our Christmas/New Year period is highly popular, we have premium rates over this time.





# Terms

---

## Booking terms

Terms apply to companies who have a credit account with Punga Cove or Marlborough Tour Company Group.

Rooms may be 'held' at no charge for a maximum of 10 working days and then must be confirmed or released.

For those without a credit account in place, a 20% deposit is required to be paid at the time of booking with full payment to be made 7 days before the commencement of the booking.

## Cancellation policy

8+ days prior to arrival	No charge
7 days – 2 days prior to arrival	Free transfer to another date within a 12-month period, or 100% tariff charge
Within 2 days prior to arrival	100% tariff charge

## Cancellation policy – Group bookings (5 rooms or more)

30+ days prior to arrival	No charge
7-30 days prior to arrival	Free transfer to another date within a 12-month period, or 50% tariff charge
1-6 days prior to arrival	100% tariff charge

## Cancellations due to Government-imposed travel bans

If your travel plans are interrupted due to Government-imposed travel bans or border closures, you are welcome to transfer your booking to a later date within the next 12 months with no transfer fee. Depending on room type availability and intended travel season, differences in room rate or room type may apply as at the date of rebooking. Otherwise our standard cancellation policy applies.

## Cancellations by Punga Cove and Marlborough Tour Company

Punga Cove and Marlborough Tour Company reserve the right to reschedule or cancel any tours, cruises and accommodation booked if it feels that they cannot be undertaken safely, e.g. bad weather conditions. In the event of Punga Cove or Marlborough Tour Company making a cancellation you will be offered an alternate date or option, or receive a full refund.

All transactions are in New Zealand dollars at the time of making a booking and at the time of making a cancellation; Punga Cove and Marlborough Tour Company Group cannot accept any liability for fluctuation in exchange rates between these transactions taking place.







## Marketing details

---

Punga Cove is owned and operated by Marlborough Tour Company.

We have a range of still images and videos available for promotional use.

**Online image library - SmugMug** <https://marlboroughtourcompany.smugmug.com/Marlborough-Sounds-Accommodation/Punga-Cove/>

**Punga Cove video - SmugMug** <https://marlboroughtourcompany.smugmug.com/Marlborough-Sounds-Accommodation/Punga-Cove/Videos>

**Punga Cove video – YouTube** [https://youtu.be/\\_kFT\\_PWrTZE](https://youtu.be/_kFT_PWrTZE)

**Punga Cove video - Vimeo** <https://vimeo.com/352555155>

**Marlborough Tour Company YouTube channel** [www.youtube.com/channel/UC\\_qexf8PaQnww6rZ6uN5pqg](http://www.youtube.com/channel/UC_qexf8PaQnww6rZ6uN5pqg)

**Marketing contact** [trade@pungacove.co.nz](mailto:trade@pungacove.co.nz)





## Property map





## Lodge location

Punga Cove is 50-60 minutes from Picton by direct water taxi or 90 minutes on a scheduled scenic sailing.





## Marlborough location

Marlborough is centrally located in New Zealand and Marlborough Airport in Blenheim is a short flight from Auckland or Wellington – with a half hour drive to Picton where you can board a Cougar Line boat. It is also a three-hour ferry ride from Wellington or you can drive from Nelson or Christchurch.

