

# PELORUS MAIL BOAT

MARLBOROUGH SOUNDS, NZ



Trade Manual  
1 October 2021 to 30 Apr 2023  
*as at 16.08.2021*







# Pelorus Mail Boat

---

|   |           |
|---|-----------|
| <b>Welcome to the Pelorus Mail Boat</b> | <b>5</b>  |
| <b>Great climate, unique experience</b> | <b>5</b>  |
| <b>Retail tariffs</b>                   | <b>7</b>  |
| <b>The Mail Run</b>                     | <b>9</b>  |
| <b>The Mail Run - details</b>           | <b>10</b> |
| <b>Itineraries</b>                      | <b>11</b> |
| <b>Sunday Cruise</b>                    | <b>12</b> |
| <b>The Mail Run - details</b>           | <b>13</b> |
| <b>Days of operation</b>                | <b>14</b> |
| <b>Getting here</b>                     | <b>14</b> |
| <b>Pelorus Mail Boat details</b>        | <b>16</b> |
| <b>Terms</b>                            | <b>17</b> |
| <b>Banking details</b>                  | <b>19</b> |
| <b>Contact details</b>                  | <b>19</b> |
| <b>Marketing details</b>                | <b>20</b> |
| <b>Marlborough location</b>             | <b>21</b> |





## Welcome to the Pelorus Mail Boat

---

The Pelorus Mail Boat has been delivering mail by water to the residents of the Pelorus Sound/Te Hoiere in the Marlborough Sounds, at the top of New Zealand's South Island, since 1918.

For over 100 years The Mail Run – carrying mail, along with groceries, farming supplies and tourists – has cruised the waters of the remote Sounds, creating a lifeline to the outside world for those living in areas without road access.

Meeting the local residents, hearing the history, spotting the plentiful wildlife and enjoying this beautiful and unique part of the world is truly a once in a lifetime experience not to be missed.

The Pelorus Mail Boat is owned and operated by Marlborough Tour Company.

## Great climate, unique experience

---

Marlborough is well known for its sunny and dry climate, and cruising the Marlborough Sounds aboard the Mail Boat is one of the most unique ways of seeing the lesser explored corners of this beautiful and diverse region.

A journey on the Pelorus Mail Boat is one that's overflowing with good old-fashioned fun. Bring your own lunch and we'll supply tea and coffee onboard, paired with a delightful commentary and wonderful experiences you'll never forget.







## Retail tariffs

Rates are per person and include Goods and Services Tax (GST) at 15%. The prices are the same year-round.

|                                  | Retail price adult | Retail price child (5-15yrs)* | Min Pax | Max Pax | Peak (Nov-Apr) | Off peak (May-Sept)** |
|----------------------------------|--------------------|-------------------------------|---------|---------|----------------|-----------------------|
| The Mail Run                     | \$140              | \$60                          | 1       | 80      | Mon/Wed/Fri    | Mon/Wed/Fri           |
| 'Postie's Day Off' Sunday Cruise | \$140              | \$60                          | 4       | 80      | Sundays        |                       |

\* Rates are gross commissionable and include New Zealand Goods & Services Tax (GST). Prices and schedule are effective from 1 October 2021, but are subject to change. As minimum passenger numbers apply for a tour to proceed, bookings will be confirmed with agents 7 days prior to departure. 0-4 year olds are free on Pelorus Mail Boat tours and cruises when accompanied by a paying adult.

\*\*Other day departures by arrangement

### Surcharges

Pelorus Mail Boat does not impose a Public Holiday surcharge. However, with the volatility of fuel prices in New Zealand we reserve the right to amend pricing as we may be forced to impose fuel surcharges to our set tour prices. In the event of this happening, you will be advised of a new pricing structure for our services.









# The Mail Run

---

## Short description

Join the historic Pelorus Mail Boat for a day cruise like no other. Explore the beautiful Pelorus Sound/Te Hoiere, hear the stories, see the wildlife and meet the locals along the way, as you deliver the mail to remote locations.

## Long description

Join the historic Pelorus Mail Boat for a day cruise like no other. Running for over 100 years since 1918, and one of the last remaining genuine mail boats left in the world, our Mail Run is an experience not to be missed.

Explore the beautiful Pelorus Sound/Te Hoiere, hear the stories, learn about its rich history, see the plentiful wildlife and meet the locals along the way, as you deliver the mail to remote locations.

Cruise near a Greenshell Mussel farm and learn about this thriving local aquaculture industry. Go ashore for a nature walk, farm visit or to a bay for lunch – depending on the run.

A once in a lifetime experience.

## Timings

|            |  |
|------------|--|
| 9.30am     | Check in Havelock Marina – Pier B (30 minute drive from Blenheim or one hour drive from Picton and Nelson) |
| 10am       | Depart for Mail Run cruise to Pelorus Sound/Te Hoiere  |
| 4pm approx | Arrive back at Havelock Marina   |

## Key selling points

- Join one of the last genuine mail boat runs in the world.
- Explore some of New Zealand's most remote, and beautiful, areas.
- Keep an eye out for plentiful wildlife.
- Learn about Marlborough's thriving aquaculture industry from our knowledgeable crew – cruise past an aquaculture farm.
- Meet the locals, and their four legged friends.



## The Mail Run - details

---

|                   |  |
|-------------------|--|
| Minimum           | Two passengers – the mail must get through   |
| Maximum           | 80 pax   |
| Check in time     | 9.30am   |
| Check in location | Havelock Marina, Havelock – Pier B   |
| Departure time    | 10am   |
| Cruise time       | 6 hours approx   |
| Inclusions        | Cruise of Pelorus Sound/Te Hoiere<br>Commentary from our experienced crew<br>Tea & coffee                                |
| Exclusions        | Lunch is not included – bring a packed lunch   |
| Bring             | Packed lunch, sunscreen, sunhat, camera, layers of clothing, swimwear for our Thursday cruise if you want to have a swim |
| Departure days    | Monday   Wednesday   Friday  |
| Block out dates   | Christmas Day - 25 December  |
| Location          | Havelock Marina Pier B – <a href="#">Google map location</a>   |
| Parking           | Paid car parking is available in the Havelock Marina carpark near Pier B.  |
| Cruise reviews    | <a href="#">TripAdvisor reviews</a> on Pelorus Mail Boat   |

**NOTE:** Adverse weather may restrict or cancel cruise departures. This decision will be at the sole discretion of the skipper. Passengers booked on cruises cancelled by Pelorus Mail Boat will be offered the opportunity to move their cruise to another day or a full refund.



## Itineraries

The Mail Run takes three routes each week. Through May – October 2022 these routes are taken once a week.

Through November 2022 – April 2023 these routes are taken twice a week.

### Eastern Mail Run

May – Oct 2022: Monday

Nov 2022 – Apr 2023: Monday & Thursday

*Including Black Point, Whatanihi, Inner Pelorus Sound, Nydia Bay, Hopewell Lodge, Jacobs Bay, Homewood, Hopai Bay, Crail Bay and Four Fathoms Bay.*

### Outer Pelorus Mail Run

May – Oct 2022: Friday

Nov 2022 – Apr 2023: Tuesday & Friday

*Including Inner Pelorus Sound, Pohuenui Island, Whakatahuri, Forsyth Island, Port Ligar, Bulwer, Homewood, Tui Nature Reserve, Hopewell Lodge and Jacobs Bay.*

### Western Mail Run

May – Oct 2022: Wednesday

Nov 2022 – Apr 2023: Wednesday & Saturday

*Including Paradise Point, Nydia Bay, Northwest Bay, Tira Ora Bay, Wilson Bay, Maud Island, Jacobs Bay and Homewood.*





## Sunday Cruise

---

### Short description

Sundays are for scenery on the Pelorus Express. Today the postie takes a day off – the perfect opportunity to spend more time experiencing the amazing natural environment and fascinating features of Pelorus/Te Hoiere and Kenepuru Sounds.

### Long description

Sundays are for scenery on the Pelorus Express. Today the postie takes a day off – the perfect opportunity to spend more time experiencing the amazing natural environment and fascinating features of Pelorus/Te Hoiere and Kenepuru Sounds.

Sit back and relax as we take you to some of the most stunning corners of this vast area of the Marlborough Sounds. Take the option of a short bush walk to really immerse yourself in nature, far from the nearest road.

Our friendly local crew will be on hand to provide interesting commentary and entertaining stories about the area, its history and the people who live and work here.

Learn about the Greenshell mussel farms you pass on the way and spot marine wildlife including dolphins, seals, penguins and many other marine birds.  
Sundays are for scenery on the Pelorus Express. Today the postie takes a day off – the perfect opportunity to spend more time experiencing the amazing natural environment and fascinating features of Pelorus/Te Hoiere and Kenepuru Sounds.

### Timings

|            |  |
|------------|--|
| 9.30am     | Check in Havelock Marina – Pier B (30 minute drive from Blenheim or one hour drive from Picton and Nelson) |
| 10am       | Depart for Mail Run cruise to Pelorus Sound/Te Hoiere  |
| 4pm approx | Arrive back at Havelock Marina   |

### Key selling points

- Join one of the last genuine mail boat runs in the world.
- Explore some of New Zealand's most remote, and beautiful, areas.
- Keep an eye out for plentiful wildlife.
- Learn about Marlborough's thriving aquaculture industry from our knowledgeable crew – cruise past an aquaculture farm.
- Meet the locals, and their four legged friends.



|                        |  |
|------------------------|--|
| <b>Departure time</b>  | 10am   |
| <b>Cruise time</b>     | 6 hours approx   |
| <b>Inclusions</b>      | Cruise of Pelorus Sound/Te Hoiere<br>Commentary from our experienced crew<br>Tea & coffee                                |
| <b>Exclusions</b>      | Lunch is not included – bring a packed lunch   |
| <b>Bring</b>           | Packed lunch, sunscreen, sunhat, camera, layers of clothing, swimwear for our Thursday cruise if you want to have a swim |
| <b>Departure days</b>  | Nov 2022 – April 2023: Sundays   |
| <b>Block out dates</b> | Christmas Day - 25 December  |
| <b>Location</b>        | Havelock Marina Pier B – <a href="#">Google map location</a>   |
| <b>Parking</b>         | Paid car parking is available in the Havelock Marina carpark near Pier B.  |
| <b>Cruise reviews</b>  | <a href="#">TripAdvisor reviews</a> on Pelorus Mail Boat   |

**NOTE:** Adverse weather may restrict or cancel cruise departures. This decision will be at the sole discretion of the skipper. Passengers booked on cruises cancelled by Pelorus Mail Boat will be offered the opportunity to move their cruise to another day or a full refund.



## Days of operation

---

|                            |   |
|----------------------------|---|
| Year-round                 | The Mail Run departs Havelock Monday, Wednesday and Friday        |
| November 2022 – April 2023 | The 'Postie's Day Off' Sunday Cruise departs Havelock on Sundays. |

The Pelorus Mail Boat is closed each year on Christmas Day – 25 December.

## Getting here

---

Marlborough is centrally located in New Zealand, at the top of the South Island.

You can fly direct to Marlborough Airport in Blenheim from Auckland and Wellington.

Other ways of getting here include driving from Christchurch, Nelson and the West Coast. Or get a ferry to Picton from Wellington – with a vehicle if required.

Havelock is half an hour's drive from Blenheim, and one hour's drive from Picton and Nelson.





## Pelorus Mail Boat details

---

### Reservations

All Pelorus Mail Boat cruises require forward booking to ensure availability.

- Email [bookings@themailboat.co.nz](mailto:bookings@themailboat.co.nz) for all bookings or enquiries. Confirmation of all email bookings will be within 24 hours.
- Phone +64 3 574 1088.

### Check In

- We ask guests to check in to our cruises at 9.30am – 30 minutes prior to our 10am departure.

### Child policy

Children of all ages are welcome on the Pelorus Mail Boat:

- Child rates apply to children 5-15 years
- Children 0-4 years travel free on our tours and cruises that allow children



## Terms

---

Terms apply to companies who have a credit account with Pelorus Mail Boat or Marlborough Tour Company.

Bookings may be "held" at no charge for a maximum of 10 working days and then must be confirmed or released.

For those without a credit account in place, a 20% deposit is required to be paid at the time of booking with full payment to be made 48 hours before the commencement of the booking.

### Cancellation policy

|                           |                    |
|---------------------------|--------------------|
| 2+ days out               | No charge          |
| Within 48 hours of cruise | 100% tariff charge |

Date changes to your booking are possible up to 24 hours prior to your scheduled departure time at no additional charge, and are subject to availability.

### Cancellation policy – group bookings

|                |  |
|----------------|--|
| 30+ days out   | No charge  |
| 10-30 days out | Free transfer to another date within a 12-month period, or 50% tariff charge |
| 1-9 days out   | 100% tariff charge   |

### Cancellations due to Government-imposed travel bans

If your travel plans are interrupted due to Government-imposed travel bans or border closures, you are welcome to transfer your booking to a later date within the next 12 months with no transfer fee.

Depending on intended travel season, differences in departure times or rates may apply as at the date of rebooking. Otherwise our standard cancellation policy applies.

### Cancellations by Pelorus Mail Boat

Pelorus Mail Boat and Marlborough Tour Company reserve the right to reschedule or cancel any tours, cruises and accommodation booked if they feels that they cannot be undertaken safely, e.g. bad weather conditions, or if total bookings on a tour or cruise are below minimum numbers. In the event of Pelorus Mail Boat or Marlborough Tour Company making a cancellation you will be offered an alternate date option, or receive a full refund.

All transactions are in New Zealand dollars at the time of making a booking and at the time of making a cancellation, and Pelorus Mail Boat and Marlborough Tour Company cannot accept any liability for fluctuation in exchange rates between these transactions taking place.

**Trade bookings:** +64 3 574 1088 [trade@themailboat.co.nz](mailto:trade@themailboat.co.nz)  
[www.themailboat.co.nz](http://www.themailboat.co.nz)









## Banking details

---

### Pelorus Mail Boat

|                   |  |
|-------------------|--|
| Bank Account      | Marlborough Tour Company<br>ANZ Bank<br>06-0601-0742421-01 |
| Swift Code        | ANZBNZ22   |
| GST number        | 57-785-081   |
| Accounts contact: | accounts@marlboroughtourcompany.co.nz                      |

## Contact details

---

|                  |   |
|------------------|---|
| Physical address | Pier B, Havelock Marina<br>Havelock<br>Marlborough<br>New Zealand |
| Postal Address   | PO Box 1000,<br>Blenheim, 7201<br>Marlborough<br>New Zealand      |
| Phone:           | +64 3 574 1088  |
| Email            | trade@themailboat.co.nz   |
| Web              | www.themailboat.co.nz   |



## Marketing details

---

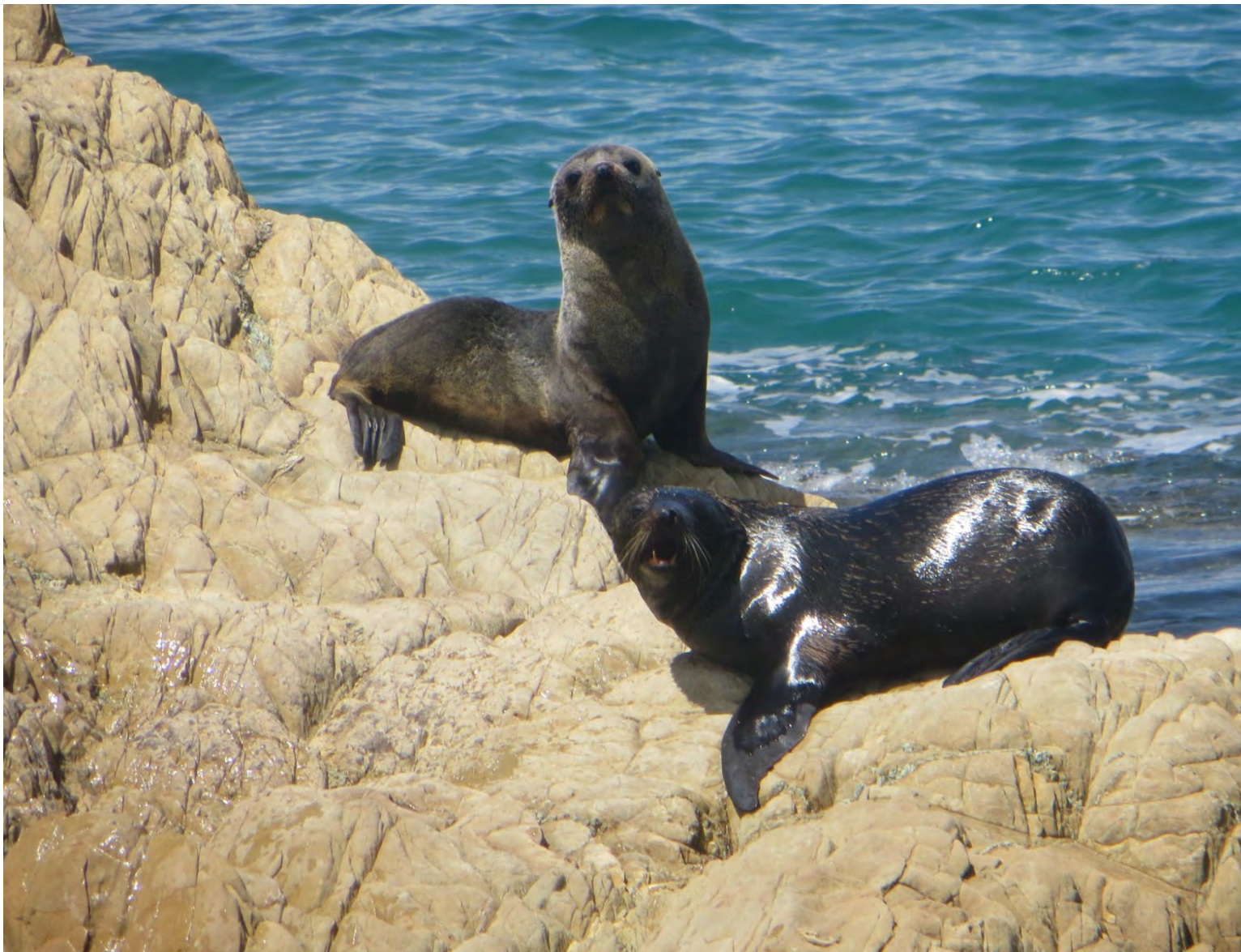
We have a range of still images and videos available for promotional use.

Online image library - SmugMug <https://marlboroughtourcompany.smugmug.com/pelorus-mail-boat>

Video - SmugMug <https://marlboroughtourcompany.smugmug.com/Pelorus-Mail-Boat/i-CgCrQsT/A>

Marlborough Tour Company YouTube channel [www.youtube.com/channel/UC\\_qexf8PaQnww6rZ6uN5pgg](http://www.youtube.com/channel/UC_qexf8PaQnww6rZ6uN5pgg)

Marketing contact [trade@marlboroughtourcompany.co.nz](mailto:trade@marlboroughtourcompany.co.nz)





## Marlborough location

Marlborough is centrally located in New Zealand at the top of the South Island. Marlborough Airport in Blenheim is a short flight from Auckland or Wellington – with a half hour drive to Havelock. It is also a three-hour ferry ride from Wellington to Picton with a one-hour drive to Havelock. Or you can drive from Nelson (1 hour to Havelock) or Christchurch (5 hours).

